

▣ **Stage coverings** ... in a wide range of materials for interior and exterior areas



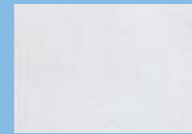
**18000**  
Beech - blackboard medium brown, black, oak-colour, natural, RAL varnished or sealed



**18010**  
Multiplex panel medium brown, black, oak-colour, natural, RAL varnished or DD-sealed



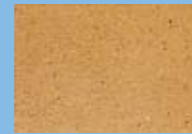
**18003**  
Pegulan



**18004**  
Dance carpet



**18005**  
Carpet



**18007**  
MDF-lumber-core plywood, natural 1 x coating



**18008**  
Riffled plate, Quartet



**18009**  
Grating, also for exterior areas



**18012**  
Rubber nub covering



**18015a**  
Waterproof board



**18018**  
Floor pattern, oak parquet or oak laminate



**18019**  
Floor pattern, beech parquet or beech laminate

**Delivery contents**

Stage element and stage floor covering fitted, 2 X-connectors, hook spanner for X-connectors, assembly instructions.

**Technical data:**

Standard size: L = 200 cm long, W = 100 cm wide,  
Standard heights: Ideal: H = 20/40/60/80 cm  
Ideal Step: H = 60 - 100 / 80 - 120 cm

Special sizes and heights available on request.

**Load-bearing capacity:** 750 kg/m<sup>2</sup>, TÜV-approved to DIN 1055

**Weight:** Depending on covering, 56 kg for beech blockboard.

**Stacking height:** 90 mm

**Colour:** Base as standard in stone grey RAL 7030, other RAL colours available on request.

**Compatibility:** with identical stage heights with the models "PRAKTIKUS", "MULTISTAGE", "UNIVERSAL" and "UNISTAGE".

**Please note when ordering:**

- Model: Ideal or Ideal Step
- Stage height
- Stage floor covering for indoor or outdoor use
- Varying colour of the base
- Extra coating of the frame

**Safety accessories**

- guard rails, step units, handrails
- Additional connection elements (in case of high loads/stresses)

**Cosmetic accessories**

- modesty panels for stage and steps
- Curtains: Plain or drapery



▣ **Accessories**



**Transport trolley**  
with removable handle, max. capacity 600 kg.



**Curtain**  
with Velcro tape and sewn-in velour strip.



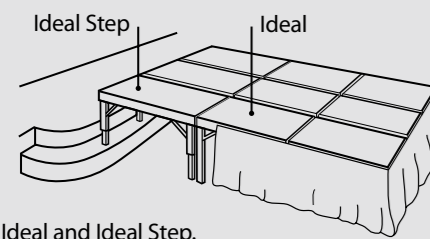
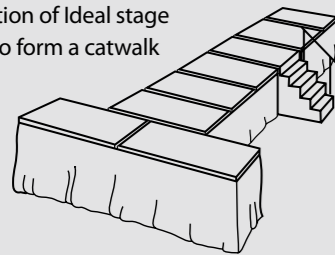
**Wooden modesty panel**  
with threaded side section and sleeve nut.

## ■ Ideal & Ideal Step

For creative stage design – the proven system, easy to assemble

## ■ Ideal & Ideal Step

Combination of Ideal stage sections to form a catwalk



Ideal and Ideal Step. Combined arrangement with a staircase.

### Mobile stage elements of varying construction

are used for the construction of platforms and stages in halls, gymnastics, sport and multi-purpose halls, as well as for catwalks and open-air stages.

The main advantage of this element construction is that anyone can quickly assemble and dismantle the platforms, stages and accessories.

Due to their flexible usage capability, mobile stage elements offer significant advantages in comparison to stationary constructions.

All the information on our stage elements is provided below

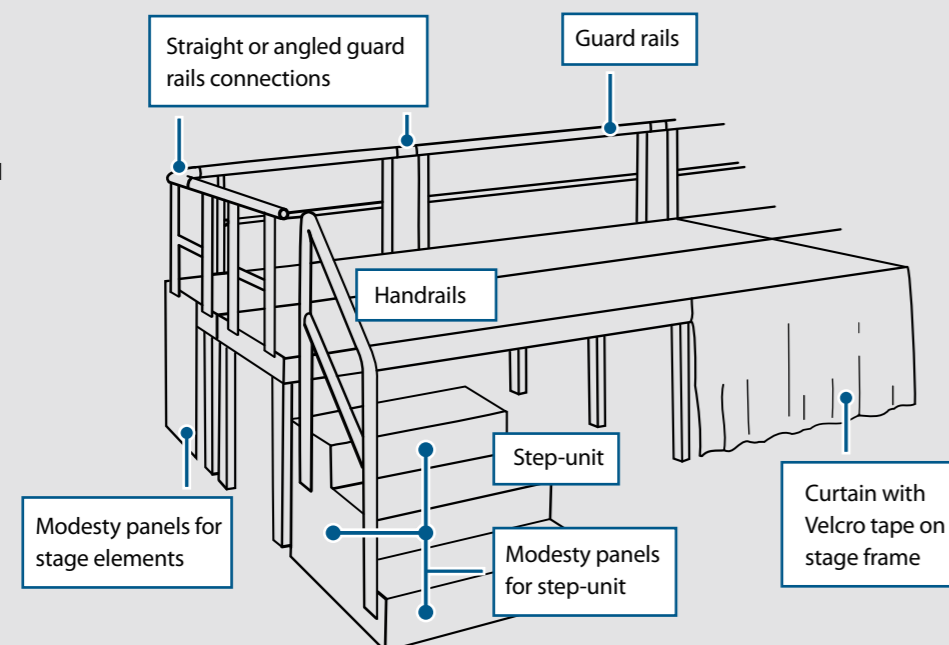
### Ideal and Ideal Step.

## ■ Comprehensive accessories

The comprehensive range of accessories makes your stage perfect, because an attractive appearance, convenience and safety are all essential requirements for a successful event.

The standard accessories for professional stage construction are shown in the illustration below.

The stage floor can be provided with various different coverings. Please see the range of patterns and materials overleaf.



## Plus points - Ideal & Ideal Step

**Stability** due to the special closed aluminium frame.

**Stable corner connections** (Figure 1) press-fitted with special aluminium frame.

**No-tilt stability** due to screw connections (Figure 2) and integrated corner bracket, bolted to the frame at the ideal point, stage feet with brace.

**Fold-snap mechanism** (Figure 3) for torsion-free, accurate locking of the pairs of feet in the usage position, with one-hand unlocking.

Stage floor **firmly connected to the frame.**

**Load-bearing capacity 750 kg/m<sup>2</sup>, TÜV-approved to DIN 1055.**

**Surrounding fitting rail** for the X-connector specially developed by us, or quick-acting connectors (Figures 4 + 6) for easy, fast and reliable connection of the stage elements to each other.

The accessories such as the guard rails, modesty panels, curtains, step-units etc. are firmly attached to the fitting rail (Figure 5a).

**Edge protection** (Figure 5b) for floor covering and underlay construction integrated into the frame up to a height of 21 mm.

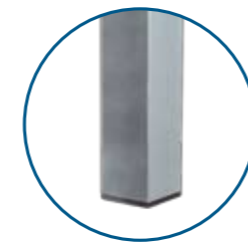
**Quick-connectors** (Figure 6) for additional safety in case of high loads/stresses.

**No height differences**, even in case of uneven hall floors, thanks to the X-connectors also supplied.

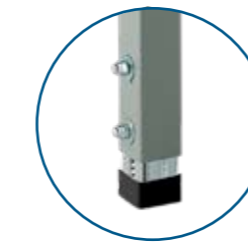
**Low storage height** of only 90 mm.

**Uncomplicated assembly** of the stage by anybody.

**Compatibility** with stages "PRAKTIKUS", "MULTISTAGE", "UNIVERSAL" and "UNISTAGE".



**Ideal**  
Feet with fixed lengths for stage heights of 20/40/60/80 cm with end cover.



**Ideal Step**  
with fully adjustable foot lengths from 60 - 100 cm or 80 - 120 cm.



Internal press-fitted corner bracket



Stable screw connection of the feet to the frame by the integrated corner bracket



Fold-snap mechanism with one-hand unlocking



X-connectors for securely attaching the stage elements together



Surrounding fitting rail for (a) comprehensive stage accessories and (b) edge protection



Quick-connector, short, for attaching the stage elements together in edge areas



Plastic rails reduced movement of stage platform



Quick connector guarantees to movement of stage platforms